

LLADRÓ



HANDMADE PORCELAIN

HERITAGE

FALL 2025

HERITAGE



WORKS OF ART IN PORCELAIN

The creations you will find in these pages showcase Lladró's technical and artistic excellence. They are capable of awakening the best feelings in us because they speak the universal language of emotions, of culture and of traditions. Works handcrafted in porcelain that tell us the most wonderful stories.





ORIENS ELEPHANT 2

SPANISH PURE BREED 6

LORD RAM LALLA 10

LORD GANESHA 14

BOB MARLEY 16

HINA DOLLS 18

WARRIOR BOY 20

DORAEMON 22

SUPERMAN 24

STAR WARS 26

BABY HORSE 30

HOLIDAYS 32

OM CANDLE 34

HIGH PORCELAIN



They say that when an elephant raises its trunk toward the sky, it brings good fortune. In Eastern cultures, it also symbolizes wisdom, gentle strength and protection. This is the spirit behind *Oriens Elephant*, a High Porcelain creation that honors this sacred animal, brought to life with the highest level of detail.

Unlike their African relatives, Eastern elephants have smaller ears—a distinctive trait that reveals their origin. This piece stands in a calm and poised position, with its trunk lifted in an auspicious gesture and its feet firmly grounded, conveying balance and presence. Its body is draped in richly detailed mantles, hand-decorated with floral engravings, scalloped edges, and a carefully chosen color palette designed to enhance every detail.

ORIENS ELEPHANT

HIGH PORCELAIN
ORIENS ELEPHANT
01002040
45x65x23 cm
17 3/4 x 25 1/2 x 9"
Limited Edition of 500 units



HIGH PORCELAIN

The colorwork deserves special mention: 20 different shades are applied by expert hands with precision, enriching every surface with unique nuances. Shades of orange, cobalt blue, emerald green, lavender, and rose blend with golden lusters and iridescent finishes, adding visual richness. Highlights include orange-tinted porcelain tassels and garlands with golden bells hanging from the elephant's neck and flanks, evoking the festive and ceremonial processions of South Asia. On its legs, delicate floral engravings continue the ornamental language, reinforcing a sense of movement and harmony.

Oriens Elephant is a limited edition of 500 units. A creation that merges symbolism, craftsmanship and color to transform any space into one filled with meaning.



ART IN NUMBERS

The elaboration of this piece involves more than 18 molds. Its decoration requires the manual application of over 30 colors, including golden and platinum lusters, and 12 different enamels. From the moment it leaves the molds, the process unfolds over more than three weeks of dedicated craftsmanship.



SPANISH PURE BREED

HIGH PORCELAIN

Spanish pure breed (black) is a High Porcelain creation that pays tribute to one of the most admired equine breeds in the world. Inspired by the majestic specimens of the Royal Andalusian School of Equestrian Art, this sculpture faithfully captures the beauty, poise, and natural elegance of the purebred Spanish horse.

Modeled with extraordinary anatomical precision, the horse is shown mid-stride, with one leg gracefully lifted, in a dignified and noble stance. Handcrafted in matte black porcelain, the base tone is enhanced by the deeper black of the blankets and the interplay of golden luster accents. The contrast between finishes brings depth to the sculpture and enhances its realism.

2026 · YEAR OF THE HORSE

HIGH PORCELAIN
SPANISH PURE BREED (BLACK)
01002041
 44x50x20 cm
 17 1/4 x 19 3/4 x 7 3/4"
 Limited Edition of 500 units



HIGH PORCELAIN

The ornamentation further elevates the ceremonial character of the piece. The saddle, bridle, breast-plate, and blanket are richly adorned with golden luster and heraldic motifs, all meticulously engraved by hand. Metallic details such as the bits and stirrups feature a mix of finishes: some in brass with gold plating, others in a silver tone, adding visual contrast and refinement. The reins and stirrup leathers are made from genuine leather, reinforcing the lifelike quality of the composition.

The saddle is especially noteworthy for its technique: a base of brown enamels mixed with metallic pigments in the same shade, applied using a drag technique to replicate the texture and look of tanned leather, with a rich, nuanced surface.

The sculpture rests on a base that evokes dark earth, decorated in brown enamels with metallic highlights. The result is a work of great visual impact, where every detail celebrates the technical and artistic excellence of High Porcelain.

Limited edition of 500 units.

Includes wooden base.

ART IN NUMBERS

The creation of this piece involves more than 27 molds. Its decoration includes the manual application of various colors, as well as metallic lusters in black and copper, and special enamels. From the moment it leaves the molds, the process unfolds over more than four weeks of dedicated craftsmanship.



HIGH PORCELAIN



They say that even the gods were once children. Before kingdoms and battles, before the feats that shaped their destinies, there was innocence. Lord Ram Lalla captures that moment suspended in time, the image of the god as a child, just five years old. A sacred being who speaks to us of purity, serenity, and truth.

“Lalla” is a tender word, a familiar whisper meaning “beloved child.” In this creation, Lord Rama is not portrayed as a king or a warrior, but as a luminous young soul, close and radiant. Through his serene expression and peaceful stance, he conveys more than an ancient tale. He offers an invitation to contemplate spirituality in its purest form, from the light that resides at the dawn of every stage in life.

This porcelain creation was made in collaboration with sculptor Dr. Arun Yogiraj, the artist behind the sacred idol of Lord Ram Lalla at the Ram Temple in Ayodhya, now revered by millions. Guided by the principles of the *Shilpa Shastra*, the sacred treatise that governs proportions, gestures, and symbolism in Indian sculptural art, we have faithfully recreated Dr. Yogiraj’s original work in the world of porcelain. Our sculptor Raúl Rubio meticulously modeled the piece, preserving every detail, to craft a faithful porcelain version of Lord Ram Lalla. Alongside Raúl’s work, our ornamentation and decoration teams contributed with the utmost precision, under Dr. Arun Yogiraj’s close supervision.

LORD RAM LALLA

HIGH PORCELAIN
LORD RAM LALLA
BY DR. ARUN YOGIRAJ
01002039
 68x39x23 cm
 26 3/4 x 15 1/4 x 9"
 Limited Edition of 499 units



HIGH PORCELAIN

The inspiration for this representation is deeply tied to the temple itself, where a unique celestial event takes place every year. During *Ram Navami*, the celebration of Lord Rama's birth, a ray of sunlight aligns with absolute precision to illuminate the god's forehead at noon. This moment, known as the *Surya Tilak*, symbolizes divine blessing and the harmony between the human and the cosmic.

Lord Ram Lalla appears calm and composed, dressed in a warm-toned tunic with a velvet-like finish. The color palette enhances his purity. To recreate the adornments, we used glazed enamels, golden lusters, and accents in ruby, emerald, and pearl tones, all applied with precision to emphasize the symbolic richness of each element. Around his neck, he wears a garland of over 500 handmade porcelain flowers, crafted petal by petal in the tradition of ceremonial offerings, combining subtle shades of white, yellow, pink, and green.

The arch that frames Lord Ram Lalla is hand-carved with great care and finished in an anthracite gray tone. Its surface is adorned with detailed representations of the ten avatars of Lord Vishnu. At the base of the arch stand two central characters in Hindu tradition: Lord Hanuman at the right foot and Garuda, Lord Vishnu's celestial mount, at the left. Completing the composition are sacred Hindu symbols sculpted around Lord Ram Lalla's head, underscoring the piece's spiritual essence.

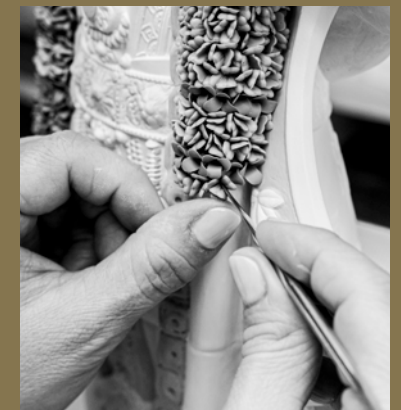
Each work in this limited High Porcelain edition requires nearly 20 days of expert handcrafted work. The porcelain Lord Ram Lalla conveys an age-old message filled with deep spirituality.



The inauguration of the Ram Temple in Ayodhya marked the dawn of a new era for Mysore born sculptor, Dr. Arun Yogiraj as he gave form to Lord Ram Lalla's image.

Sculpting has been a tradition in his family for five generations. He considers his home his first school of sculpting. At age eight, he was captivated watching his father carve idols from stone. So far, he has crafted over 10,000 sculptures in various styles and sizes. He was honoured by Indian Prime Minister Narendra Modi and received the Karnataka State Award in 2023. He was personally appreciated by Kofi Annan in 2014. His notable works include the Ram Lalla idol in Ayodhya, Indian freedom fighter, Netaji Subhash Chandra Bose's sculpture at India Gate and Sri Adi Shankaracharya's idol at Kedarnath.

LORD RAM LALLA



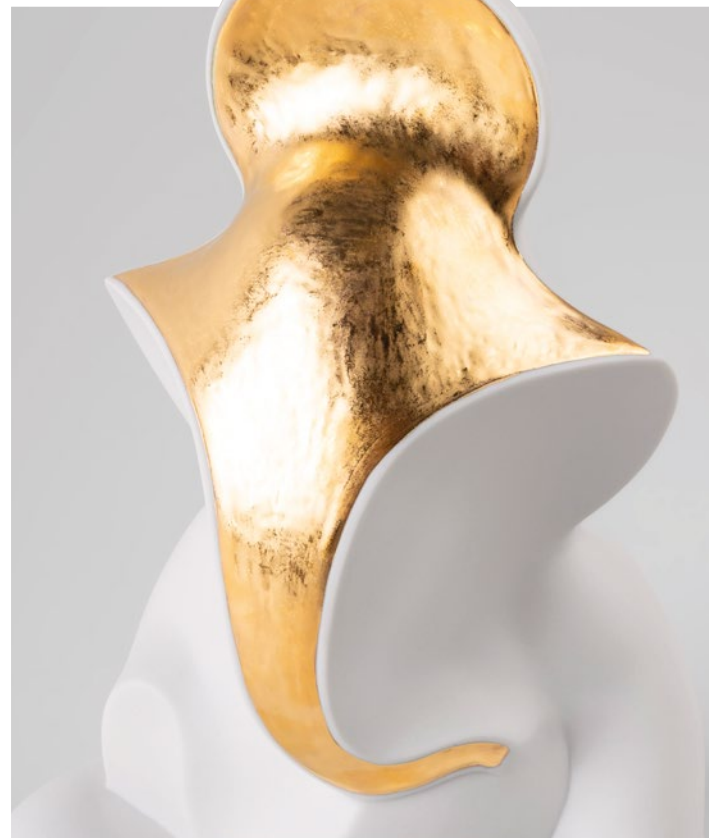
ART IN NUMBERS • The creation of this piece involves more than 30 molds. Its decoration includes the manual application of over 10 colors, some of them created exclusively for this limited edition. It also features golden

luster, enamels, and over 500 flowers, each crafted petal by petal. From the moment it leaves the molds, the process unfolds over nearly three weeks of dedicated craftsmanship.



LORD GANESHA

INDIA PREMIERE
LORD GANESHA
– ETERNAL LIGHT
01009804
 26x18x14 cm
 10 1/4 x 7 x 5 1/2"



Lord Ganesha is one of the most revered deities in Hinduism. He symbolizes wisdom, intelligence, and new beginnings. In this creation, we reinterpret his image through abstraction, applying a refined approach to both form and decoration. We establish a dialogue with tradition from a current perspective, connecting spirituality and design.

According to Hindu tradition, Ganesha is the son of the goddess Parvati and the god Shiva. Legend has it that Parvati created him from clay to protect her while Shiva was away. When Shiva returned and found Ganesha blocking his way—unaware of who he was—he beheaded him in a fit of rage. Upon learning the truth, he brought him back to life by replacing his head with that of an elephant.

From that moment on, Ganesha was recognized by the gods as a special divinity, and Shiva granted him the honor of being invoked at the beginning of any ritual, journey, or new endeavor.

His appearance, with a large head symbolizing wisdom, a trunk that adapts to any situation and a calm body, represents the ability to overcome challenges with intelligence, patience, and balance. The use of matte white porcelain and the application of golden luster reflect the attributes of the deity and reinforce his symbolic character. *Lord Ganesha – Eternal Light* is an example of how spiritual legacy continues to inspire new forms of expression.

BOB MARLEY
01009794
 45x30x26 cm
 17 3/4 x 11 3/4 x 10 1/4"
 Limited Edition of 250 units



Talking about Bob Marley means talking about music that crosses borders, about lyrics that inspire freedom, and about a voice that still resonates. Born in Jamaica, Marley brought reggae to audiences all over the world. This musical style, rooted in his homeland, blends slow rhythms with a powerful message. Through his songs, he championed a way of life grounded in peace and justice.

This portrait of the artist, handcrafted in matte black porcelain, is a limited edition of 250 pieces. It stands out for its realistic modeling and ornamental detail. The texture of the hat, pre-

cisely recreated, is decorated in the unmistakable colors of Rastafarian culture, a spiritual movement that shaped his thinking and his music. The shirt collar features silver luster accents, while the peace-symbol pendant reinforces the message he shared throughout his life.

With this creation as tribute, and with lyrics like his iconic "Everything's gonna be alright," we celebrate a legacy of hope with music as its flag.

The sculpture includes a base that completes the composition.

BOB MARLEY



"Bob Marley" and the Flag logo are registered trademarks of Fifty-Six Hope Road Music, Ltd. in the U.S. and other countries. Used under license. ©2025 Fifty-Six Hope road music, Ltd. All rights reserved.

HINA DOLLS

During the Heian period, the emperor and empress were seen as guardians of tradition and embodiments of wisdom, courage, and harmony. Over time, their presence came to hold deep symbolic meaning. That is why, during Hina Matsuri, which is celebrated each March in Japan, it is customary to gift newborn girls a pair of Hina Dolls as a wish for a happy and prosperous life.

This limited edition, crafted in glazed porcelain, stands out for the subtlety of its decoration, conveying balance and serenity. The elegant contrast between

the deep blue of the emperor's kimono and the salmon, cream, and coral tones of the empress's attire evokes the refined aesthetic of the imperial court. Meticulous details, such as the precisely sculpted folds of their garments, delicate hair ornaments, and hand-painted facial features, reflect the faithful recreation of the ceremonial dress and customs of that era.

A couple of great cultural and decorative value, where tradition, craftsmanship, and beauty come together.



Peana de madera incluida.

HINA DOLLS (BLUE-SALMON)
01009793
 26x41x22 cm
 10 1/4 x 16 1/4 x 8 3/4"
 Limited Edition of 500 units



WARRIOR BOY

WARRIOR BOY (COPPER)
01013056
 34x21x19 cm
 13 1/2 x 8 1/4 x 7 1/2"
 Limited Edition of 500 units



Warrior Boy (Copper) is inspired by a Japanese tradition celebrated every year on May 5th, known as Children's Day. On this occasion, homes are decorated with warrior representations to wish children health and strength. These displays express the hope that children will grow up with courage and determination.

This limited edition is crafted in matte white porcelain and features detailed engraving across the entire surface, from the helmet to

the footwear. The decoration combines green tones with copper and golden luster accents, highlighting the armor and accessories. The boy holds a *saihō*, a staff used by commanders to signal in battle, along with a sword. These elements emphasize his role as a young warrior.

Warrior Boy (Copper) stands out for its meticulous craftsmanship and captures the spirit of a deeply rooted cultural tradition in Japan.

DORAEMON



Doraemon

LLADRÓ
HANDMADE PORCELAIN
SPAIN

We present in porcelain one of the most beloved characters in the world of manga and anime: Doraemon. The robot cat who has accompanied generations with his energy, tenderness, and the four-dimensional pocket full of secret gadgets.

A time traveler from the 22nd century, Doraemon journeys to the past to help Nobita Nobi, a sweet and scatter-brained boy, with the goal of improving his future. Since then, he has become a true cultural icon, starring in countless stories that blend friendship, imagination and futuristic technology.

In this porcelain version, we've captured him just as we know and love him: blue, round, expressive, always smiling and with a signature playful wink.

Each color on the piece has been carefully applied using vibrant, glazed enamels. From the deep blue of his body to the red and yellow of his details, the original palette is faithfully preserved, capturing the character's energy. The fully handcrafted modeling reflects the freshness of the animated series and Doraemon's contagious joy, now reimaged in porcelain.

More than just a character, he's a symbol of friendship, optimism, and the kind of help we've all needed at some point. And now, he's also for those who grew up with him... or are just now discovering his magic.



ドラえもん

maruc」 ©藤子プロ

maruc」 ©Fujiko-Pro

DORAEMON
01009728
14x12x8 cm
5 1/2 x 4 3/4 x 3 1/4"
Numbered Edition



© 1970-2025 Fujiko Pro Licensed by Animation Int'l





SUPERMAN
1009777
 46x42x27 cm
 18 x 16 1/2 x 10 3/4"
 Limited Edition of 500 units

SUPERMAN

SUPERMAN THE MAN OF STEEL, NOW IN PORCELAIN

We've reimagined the ultimate superhero with a porcelain creation that captures the essence of the character: strength, integrity, and a quiet determination to make the world a better place. Inspired by the classic Superman from the original 1939 comics by Jerry Siegel and Joe Shuster, we present him in his most iconic pose, wearing his unmistakable suit.

To recreate Superman's outfit, we developed a special shade of blue and metallic reds exclusively for this edition. The combination is elevated by matte and satin gold luster detailing on the emblem and belt. *Superman* stands on a mineral-textured base representing Krypton, his home planet, the source of his strength

and, paradoxically, the origin of his greatest weakness: kryptonite. Every detail has been carefully crafted, from the character's anatomy and expression to the textures of the ground beneath his feet.

Known on Earth as Clark Kent, he balances his job as a reporter at the *Daily Planet* with a silent mission to protect the world with compassion and superhuman abilities.

Sculpted by Eva Cuerva and entirely handcrafted in our workshops in Valencia, this limited edition is part of our collection dedicated to contemporary cultural icons.



DARTH VADER™ HELMET



The Darth Vader™ helmet, an unmistakable icon from the cinematic universe of the Star Wars™ saga, is reinterpreted in porcelain through a detailed technical and decorative process that highlights the character and his singular aesthetic. Crafted in glazed black porcelain, the piece emphasizes the angular lines and striking geometry of the original design.

Standout features include the side hinges and nose section, finished with silver luster to enhance contrast, and remain faithful to the original. The matte black grille, along with the eyes painted with pearl luster over black to create a mirrored effect, intensify the character's enigmatic and instantly recognizable expression. The piece is mounted on a metal base with stand, enhancing its display value and making it ideal for interior spaces.

This creation is part of a limited edition of 1,500 units, making it a highly valuable collectible for Star Wars™ enthusiasts and lovers of contemporary design alike. A porcelain artwork that merges design, technical precision, and cinematic culture.

DARTH VADER HELMET
01009764
 33x27x28 cm
 13 x 10 3/4 x 11"
 Limited Edition of 1,500 units

**STAR
WARS**

LLADRÓ
 HANDMADE PORCELAIN
 SPAIN



Darth Vader™ is one of the most powerful and iconic characters in the Star Wars™ universe. This version, crafted in matte black porcelain, presents him as the leader of the Empire, with his signature cape flowing and lightsaber in hand, radiating strength and intensity.

Hand-modeled and painted by our artists, every detail has been carefully considered. The helmet, armor, suit texture and commanding expression

have all been recreated with precision to reflect his formidable presence. The fully matte finish enhances the volume and adds striking visual impact.

Inspired by the film saga that has influenced generations, Darth Vader™ embodies the dark side, the tension between power and redemption, and the magnetic presence of a character who transcends the screen. A must-have creation for Star Wars™ fans.

DARTH VADER (BLACK)
01009782
 40x42x29 cm
 15 3/4 x 16 1/2 x 11 1/2"



© & ™ Lucasfilm Ltd.

DARTH VADER™



**STAR
 WARS**

LLADRÓ
 HANDMADE PORCELAIN
 SPAIN

2026 · YEAR OF THE HORSE



Baby Horse is a porcelain creation that belongs to the *Baby Animals* collection—a fun and playful interpretation of the 12 animals of the Chinese zodiac. This piece portrays the horse from an informal and friendly perspective, while preserving the essence of this animal as a symbol of energy and freedom.

The pure white finish, characteristic of the collection, is combined with glazed and matte details that add texture and contrast. The hand-carved decorative bib stands out, along with its deep black eyes that give the piece a highly expressive look.

Those born under the sign of the Horse (1954, 1966, 1978, 1990, 2002, 2014, 2026) tend to be energetic, independent, and sociable. Lovers of freedom and adventure, they are known for their enthusiasm, charisma, and optimistic spirit. Their dynamic nature makes them natural leaders who inspire those around them.

The *Baby Animals* collection invites us to explore an ancient tradition through a contemporary lens.



BABY HORSE
01009029
19x18x8 cm
7 1/2 x 7 x 3 1/4"

BABY HORSE

HOLIDAYS

There are unmistakable signs that Christmas has arrived. The ornament boxes are opened, the familiar melodies start playing again, and the house fills with the scent of cinnamon and freshly baked treats.

The 2026 Christmas Ball and Bell are the star ornaments of the most heartfelt season of the year. These porcelain pieces are decorated with delicate holly branch reliefs, a plant traditionally associated with Christmas that symbolizes hope and renewal. Both pieces include the inscription of the year 2026, highlighted in a soft pastel tone, and a blue ribbon for easy hanging. They also come in special packaging illustrated with the same motifs, making them a truly unique and meaningful gift.

Ornaments that represent the spirit of Christmas.



2026 CHRISTMAS BELL
01018488
9 x 8 x 8 cm
3 1/2 x 3 1/4 x 3 1/4"
Limited Edition of 5,000 units

2026 CHRISTMAS BALL
01018489
10 x 9 x 9 cm
4 x 3 1/2 x 3 1/2"
Limited Edition of 4,000 units

Special packaging
2026 Limited Edition



Happy Holidays is a matte white porcelain ornament, handcrafted and hand decorated. Its conical design features snowflakes painted in golden luster, engraved stars, and a subtle line pattern in relief. A creation that captures the charm of winter landscapes and the warm glow of festive lights.

It includes a golden ribbon to hang on the tree or anywhere in the home. The perfect ornament to decorate during the most meaningful moments of the season.



HAPPY HOLIDAYS - CHRISTMAS TREE
01018490
9x9x9 cm
3 1/2 x 3 1/2 x 3 1/2"

When the holiday season arrives, everything takes on a different glow. Spaces fill with warm lights, shared moments, and little details that feel extra special. *Firefly - Magic Holidays* was created to light up those moments with a design that captures the spirit of the season.

This special edition belongs to the *Firefly* collection, a series of wireless table lamps made entirely of porcelain. Featuring a dimmable LED system, built-in battery, and USB charging, it combines craftsmanship and functionality. Its shape and its palette of green, burgundy, and gold make this lamp the perfect choice to bring light and magic to the most heartwarming time of the year.



Special packaging

FIREFLY LAMP - MAGIC HOLIDAYS
01024466
30x12x12 cm
11 3/4 x 4 3/4 x 4 3/4"





OM CANDLE -
GARDENS OF VALENCIA
01040314
12x8x8 cm
4 3/4 x 3 1/4 x 3 1/4"

Om, the sacred syllable in Hinduism and Buddhism, represents union with the supreme, the origin of sound, and the balance between body, mind, and spirit. This symbol is hand-engraved on the porcelain lid of this scented candle.

The golden glass vessel holds *Gardens of Valencia*, an enveloping fragrance with citrus and fruity notes. The freshness of bergamot and the sensuality of tuberose blend with warm hints of sandalwood and musk.

A creation designed to accompany moments of calm, meditation, and inner well-being.

OM CANDLE

Photography
Lladró

Many thanks to
Antonio Velfin



LLADRÓ - VALENCIA, SPAIN
(+34) 963 187 000
(+34) 900 211 010 (TOLL FREE)
customer-services@es.lladro.com
www.lladro.com

Lladró is the success story of an iconic Spanish brand. A world leader in the design, manufacturing and distribution of porcelain art creations. Lladró is a unique mix of talent, audacity and meticulousness in the quest for excellence.

From chemistry to modeling, as well as carving, etching, painting... a team of expert artists and designers keeps alive the ancient crafts and methods of turning porcelain into dreams. Unique craft processes that are applied in the most figurative Lladró as well as in lighting products, home accessories and jewelry. **The degree of craftsmanship is so high that no two pieces are exactly alike, which means that there may be differences between creations from the same series. That's why Lladró creations are unique and unrepeatable.** Works that invite us to relax and enjoy moments of intimacy, further enhanced by the exclusive and distinguishing touch of handcrafted porcelain.

The pictures of the pieces may vary slightly from the original models.

WHERE PORCELAIN BECOMES ART



LLADRÓ

HANDMADE PORCELAIN
Spain



01086270